



EverExpanse
Enterprise & Digital Solutions

**Engineering Talent Solutions
for Payments, FinTech &
Embedded Systems**



01

ABOUT **EverExpanse**

Established in 2019, EverExpanse is an Enterprise & Digital Solutions company specializing in Engineering Talent Solutions for Payments, FinTech, and Embedded Systems.

We help organizations build and scale high-performing engineering teams by providing experienced technology professionals across critical domains such as payment systems, financial platforms, and embedded product development, enabling companies to accelerate product development, strengthen engineering capabilities, and deliver secure, reliable, and high-performance technology solutions.

EverExpanse supports global enterprises through flexible engagement models including Staff Augmentation, Permanent Hiring, and Outcome-Based Delivery. ensuring the right talent is available at the right time. With strong domain expertise and a trusted engineering network, we partner with organizations to solve complex technology challenges and support long-term innovation and growth.

EverExpanse operates across India and the United States, supporting global clients through distributed engineering teams and reliable talent delivery aligned with evolving business and technology needs.

02

Services Talent Solutions

» Talent Solutions – Flexible Engagement Models

- Staff Augmentation (Contract)
- Staffing (Permanent Hiring)
- Outcome-Based Delivery Model (Project Ownership)

» Delivery Engagement Models

EverExpanse provides flexible engagement models tailored to customer needs:

▶ Staff Augmentation

- Client manages project, EverExpanse provides skilled resources

▶ Staffing

- EverExpanse sources and delivers qualified engineering professionals
- Engineers integrate with your team to support product development

▶ Outcome-Based Delivery Model

- EverExpanse owns delivery of specific modules or full project
- Defined scope, timelines, and delivery milestones
- SLA-driven performance commitments
- Reduced client management overhead

03

Talent Solutions Payments & FinTech Engineering

EverExpanse provides specialized Staff Augmentation and Staffing services in Payments and FinTech Engineering, supporting payment processors, financial institutions, POS manufacturers, payment gateway providers, and FinTech platforms in building secure, compliant, and scalable payment solutions.

With deep expertise across the complete payment ecosystem—from EMV kernel development and POS application engineering to payment gateway integration, transaction processing, and certification—EverExpanse enables organizations to accelerate payment product development and regulatory compliance through highly skilled engineering talent.

Our payment engineering professionals bring hands-on experience in EMV L1, L2, and L3 certification, contact and contactless payment technologies, payment device software, secure transaction processing, and gateway integrations aligned with PCI, EMVCo, and scheme certification requirements.

Our engineers have supported global payment processors, device manufacturers, and FinTech platforms across EMV-certified environments.

» Key Points

- Payment Device Software & EMV Kernel Development
- POS Application Development
- Payment Gateway Development & Integration
- Payment Processing Systems
- Certification & Compliance Support
- Digital Payment Technologies

» Payment Technologies Expertise

- Embedded C / C++
- Android POS Development
- Java / GoLang / .NET Backend
- ISO 8583 Integration
- EMV Certification Support
- Payment Gateway Development & Integration

04

Talent Solutions **Embedded Systems & Automotive Engineering**

EverExpanse provides specialized Staff Augmentation and Staffing services in Embedded Systems and Automotive Engineering, supporting OEMs, Tier-1 suppliers, and industrial technology companies in accelerating product development and validation. Our embedded talent pool brings deep expertise in real-time systems, automotive software platforms, hardware design and development, and system validation aligned with industry standards and safety requirements.

We support engineering teams across the full embedded development lifecycle—from low-level firmware development to AUTOSAR-based architecture, hardware validation, and automated testing—ensuring seamless integration with existing engineering environments and delivery models.

Our structured sourcing, technical screening, and onboarding processes ensure rapid deployment of skilled engineers aligned with your product timelines, compliance requirements, and engineering workflows.

We support OEMs, Tier-1 suppliers, and product engineering organizations building next-generation automotive and industrial embedded systems.

» We support engineering teams across

- Powertrain Control Systems
- ECU Development
- Automotive Communication Protocols (CAN, LIN, Ethernet)
- Functional Safety (ISO 26262)
- Real-Time Embedded Systems
- Hardware-Software Integration

» Key Skills

- Embedded C / C++
- AUTOSAR (Classic & Adaptive)
- ECU Software Development
- MATLAB / Simulink
- Hardware Integration
- Test Automation & Validation

05

Talent Solutions Why Work With Us?

Global Talent Reach

Operating across India and the USA, we specialize in Payments & FinTech and Embedded & Automotive Engineering talent.

In-House Lab & Training Infrastructure

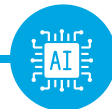
We maintain dedicated in-house lab & infrastructure to provide initial training and grooming candidates.

Proven Delivery Model

High fulfillment ratios, low dropouts, and excellent candidate retention.

Seamless Onboarding & Retention

We don't just hire; we ensure smooth integration for long-term success.



Speed That Matters

Reduced hiring timelines through pre-qualified engineering talent pools.

Domain Expertise

Specialized in Enterprise Software, Payments & FinTech, Embedded & Automotive Engineering talent.

Proven Success Rate

Strong candidate retention supported by careful screening and onboarding.

AI-Driven Matching

We use AI-enabled matching tools to improve talent fit and reduce hiring errors.

06

TRUSTED BY Clients & Partners



ematica
Intelligence At Work

2025

NOUS
INFOSYSTEMS
LEVERAGING INTELLECT

2024

Green.Money[™]

Al-Tijari
Commercial Bank of Kuwait

2023

Oakter
ADVANCED INDIAN GDM

Synechron **SP SPECIALTY**
PAYMENTS.

2022

EBIXCASH

PROMPTNOW

2021

ITC INFOTECH

PODAR
EDUCATION NETWORK
KIBT TAKH ERABE

OrderEx

2020

NCR

SBTS GROUP
Technology Made Simple

2019

SRK

Johnson Controls




EverExpanse

Enterprise & Digital Solutions

Contact us to Discuss your Engineering Talent Requirements.

EverExpanse Pvt Ltd


 709, White Square Building, Hinjawadi,
Pune, Maharashtra 411057, India


 +91 7028169977

 everexpanse.com

 <https://www.linkedin.com/company/everexpanse>

EverExpanse, LLC

 2251 Double Creek Dr Suite 3001,
Round Rock, Texas 78664, USA

 +1 201-298-4898

 info@everexpanse.com

 <https://x.com/everexpanse>